

# **Third Eye Recording Solution Manual**

**(Individual Version)**



# **T3E-I User Manual**

## **1. T3E-I ( The Third Eye Recording Solution Individual Version)**

### 1.1 What is T3E-I?

T3E-I, developed by Avidacom, is free software packaged with T3E for recording video over the network. It saves, searches, and, plays-back multimedia data from remote places via network not just simple monitoring through web browsers. For more information and getting a newer version, please visit product web site, <http://www.avidacom.com>.

### 1.2 Major Features of T3E-I

- ✧ Recording, Searching, Playing-back from remote side
  - T3E-I records, searches, and, plays-back motion pictures from remote place on client's pc. Video data size by MPEG4 compression algorithm is 1.5Kbytes to 2.0Kbytes (320x240), which means that hard disk of 2GBytes is needed for recording 10 hours a day. Therefore, you can start up very economic and efficient remote recording system with T3E-I.
  - Security managers can record video and do their duties from remote place, or franchise operators with many locations can monitor their businesses from headquarters making sure that every location is under control.
- ✧ Remote Monitoring
  - Display modes-single, multi, sequence, full-and camera controls-pan, tilt, zoom, preset-that are supported on the web browser are all supported on T3E-I too. On top of that, users can save and print out a still image that they want to use immediately.
  - If you are a frequent user of T3E system, you won't have to wait for graphic images on the web to be loaded each time of access with T3E-I installed in your computer.

## **2. PC Specification Recommended**

### 2.1 Hardware

- ✧ Pentium III 64MB Memory or larger

### 2.2 Software (OS)

- ✧ Microsoft Windows98/2000/NT/XP

### 3. Installation

#### 3.1 Overview

- Have CD for T3E-I installation provided with T3E ready.
- Follow as installation wizard instructs.

#### 3.2 CD for Installation

Have the CD in T3E package ready. T3E-I developed by Avidacom Inc. is only for use of those who purchased T3E. Usage by anyone beside purchaser is regarded as unlawful and is subject to penalty for violation of copyright law.

#### 3.3 Installation Wizard

3.3.1 Run 'T3E-I Installer' from the CD.

3.3.2 You have following installation wizard. Click 'Next' button.



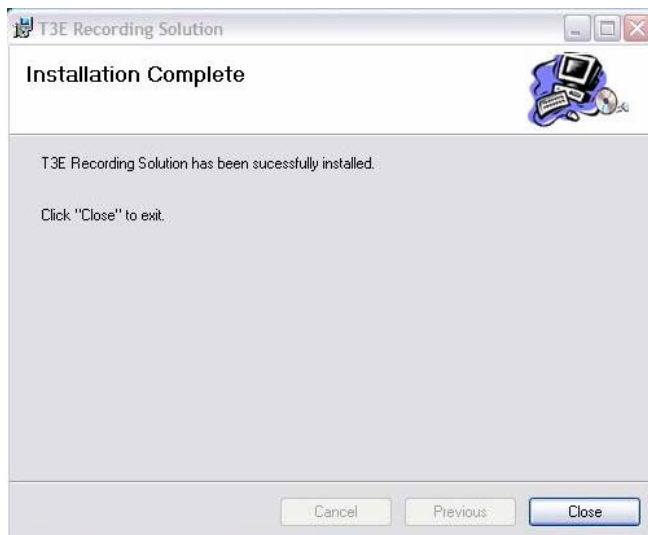
3.3.3 Select the folder you want to install T3E-I in. Default will be 'C:\Program Files\T3E Recording Solution'.



3.3.4 Click 'next' button, you have window as below. Now installation is complete.



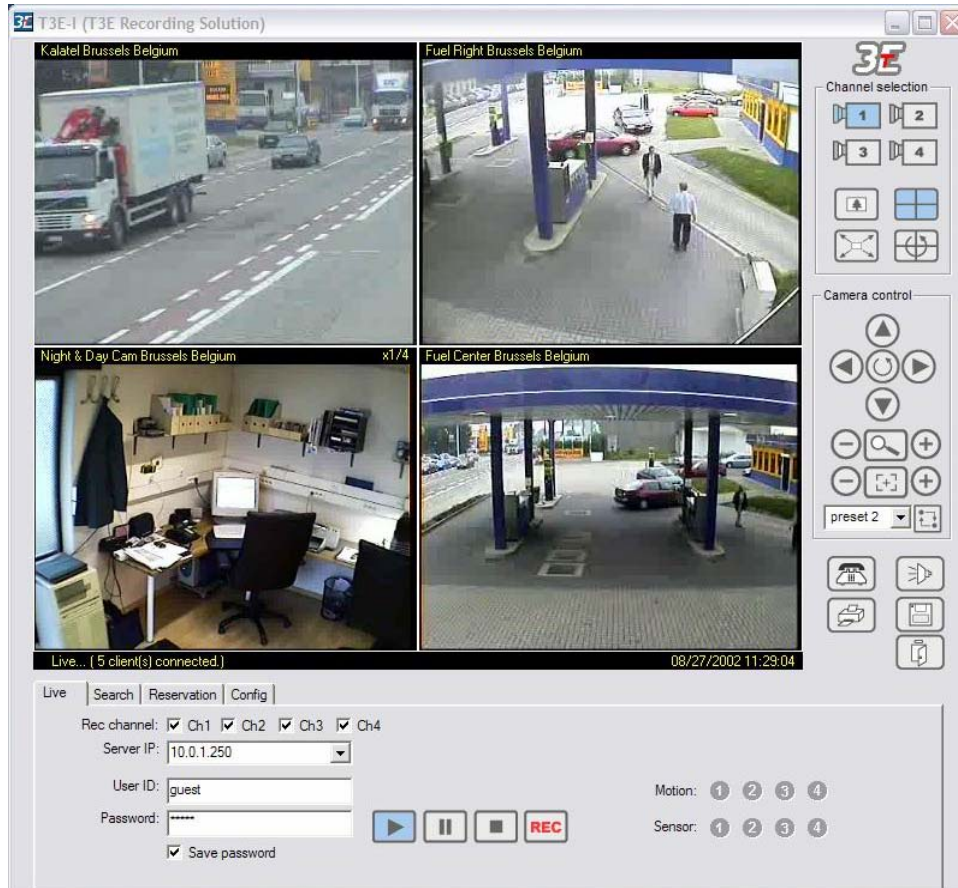
3.3.5 Window like below will pop up when the automatic installation process is over. Click 'close' and finish all installation procedure.



## 4. Functions of T3E-I

### 4.1 Real-time Monitoring and Recording

#### 4.1.2 Overview



T3E-I window will appear if you run the application. You can start real-time monitoring by typing IP address assigned to T3E into 'Server IP' and typing appropriate ID and password into 'User ID' and 'password'.

#### 4.1.3 Live Mode



In 'Live' mode, you can start monitoring real time video from T3E, manipulating functions such as pause or stop, and start recording video here. Also it notifies events from motion detection or sensors. Visiting history will be saved by 16 for easier connection from the next visiting.



This starts monitoring of real time video. Click this button after typing appropriate values into 'server IP', 'user ID', and, 'password'.



Clicking this button start recording video that is being monitored in real time. Select channel(s) that you want to start recording from 'Rec channel'. This button will start blinking if recording is started. Click 'stop' button if you want to stop recording. This button will be blinking even in schedule recording mode.

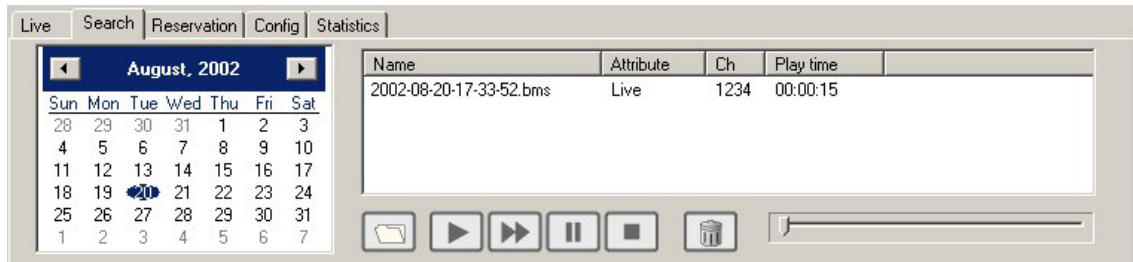


Clicking this button will pause monitoring until 'play' or this button is clicked again.



Clicking this button stops monitoring or recording video from T3E. If you click it while recording, only recording will be stopped leaving live monitoring still on.

#### 4.1.4 Search Mode



In 'search mode', you can search and playback video that has been recorded.



Clicking this button after selecting a file from search file list will playback the selected file.



Clicking this button will playback the file being played-back twice faster than normal.



Clicking this button pauses playing-back. Click 'play' or 'fast forward' to start playing again.



Clicking this button stops playing-back.



Clicking this button will erase the selected file from the list and delete it.



A file from any directory can be played-back by clicking this button.

By using 'scroll bar', you can start playing-back from the point that you want.  
You can search for files on a specific date by clicking a date from the calendar.

#### 4.1.5 Reservation Mode

Attribute	From	To	Duration(mi)
Sequence	2001-7-25 12:28	2001-7-25 12:29	1
Motion	2001-7-26 12:28	2001-7-27 12:29	5
Sensor	2001-7-26 12:28	2001-7-27 12:29	5

T3E-I supports 3 types of schedule recording modes including ‘sequence’, ‘motion’, and, ‘sensor’.

‘Sequence’ mode starts recording from starting time(From) to ending time(To). ‘Motion’ mode only starts recording upon event arising during preset period from ‘duration after event’. ‘Sensor’ mode starts recording when sensor generates signal and feeds it to T3E-I during the specified period.



Clicking this button adds a new reservation to the reservation list.



Clicking this button starts modifying the selected reservation.



Clicking this button deletes the selected reservation from the list.

#### 4.1.6 Configuration Mode

You can set the configuration for sensor, motion, event notification, and, recording environments.

‘Notify on sensor’ notifies to the sensor event notification section on ‘live’ mode when sensor event occurs.

‘Notify on motion’ notifies to the motion event notification section on ‘live’ mode when motion event occurs.

‘Disk free space (GBytes)’ specifies the disk free space that will be remaining always. If T3E-I reaches full disk space that minus disk free space from total disk space, it stops recording.

‘Record directory’ specifies the directory where the recorded files will be saved.

‘Record frame rate’ specifies the frame rate at which real time video will be saved.

‘Directory Server IP’ specifies directory server IP that maps T3E id and its real IP.

Others



Clicking this button prints out a still image of video that is being monitored in real time of played-back. You can print out the image that you want at pause mode better.



Clicking this button saves a bitmap image of video while monitoring or playing-back. Click this button and type in file name after selecting the channel(s) that you want from ‘Rec channel’.



## Appendix I T3E-I Specifications

Items	Specification
Monitoring	Single view, Multi view, Full screen, Sequence view
Recording	Real time mode, Preset mode, Alarm mode
Search	Search by date, by time, by nature
Playback	Normal, Fast
Others	Event alarm notification
	Still image recording and printing
	Channel / Frame rate selection
	Specification of disc size for recording (over-writing)
Data size	2 to 4 kilo bytes per frame

## **Appendix II    Trouble Shooting**

### **T3E-I won't start.**

#### **I do not have any video.**

- ✧ Check if T3E is turned on and running.
- ✧ If you can't access with an IP address, check whether T3E is hooked up to network properly and network configuration from administration mode.
- ✧ Check if cameras are hooked up correctly and cameras are turned on.
- ✧ Check if channels for cameras are set 'enabled' from video setting menu of administration mode.

#### **I can not access T3E.**

- ✧ Check if you have typed in IP address properly into 'server IP'.
- ✧ Get disconnected from T3E that you have accessed currently by clicking 'stop' button and try to access again.
- ✧ Check if 'user ID' and 'password' are put in correctly.

#### **There is no notification on 'motion' or 'sensor'.**

- ✧ Check if 'notify on motion' or 'notify on sensor' is enabled from 'Config'.
- ✧ Check if sensor is correctly connected to T3E.

#### **T3E-I won't record.**

- ✧ Check if channels that you want to record are selected from 'Rec channel' of 'Live' mode.

\*Please visit our homepage on Internet ([www.avidacom.com](http://www.avidacom.com)) for more trouble shootings or questions that you may have.